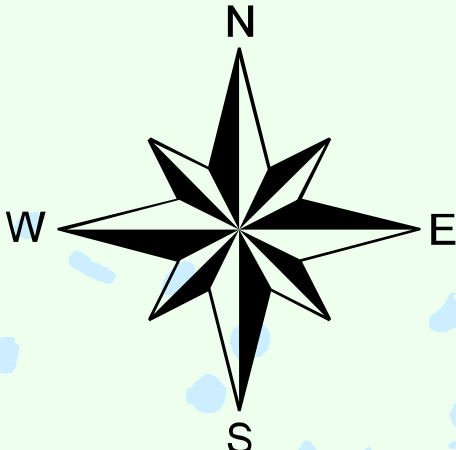
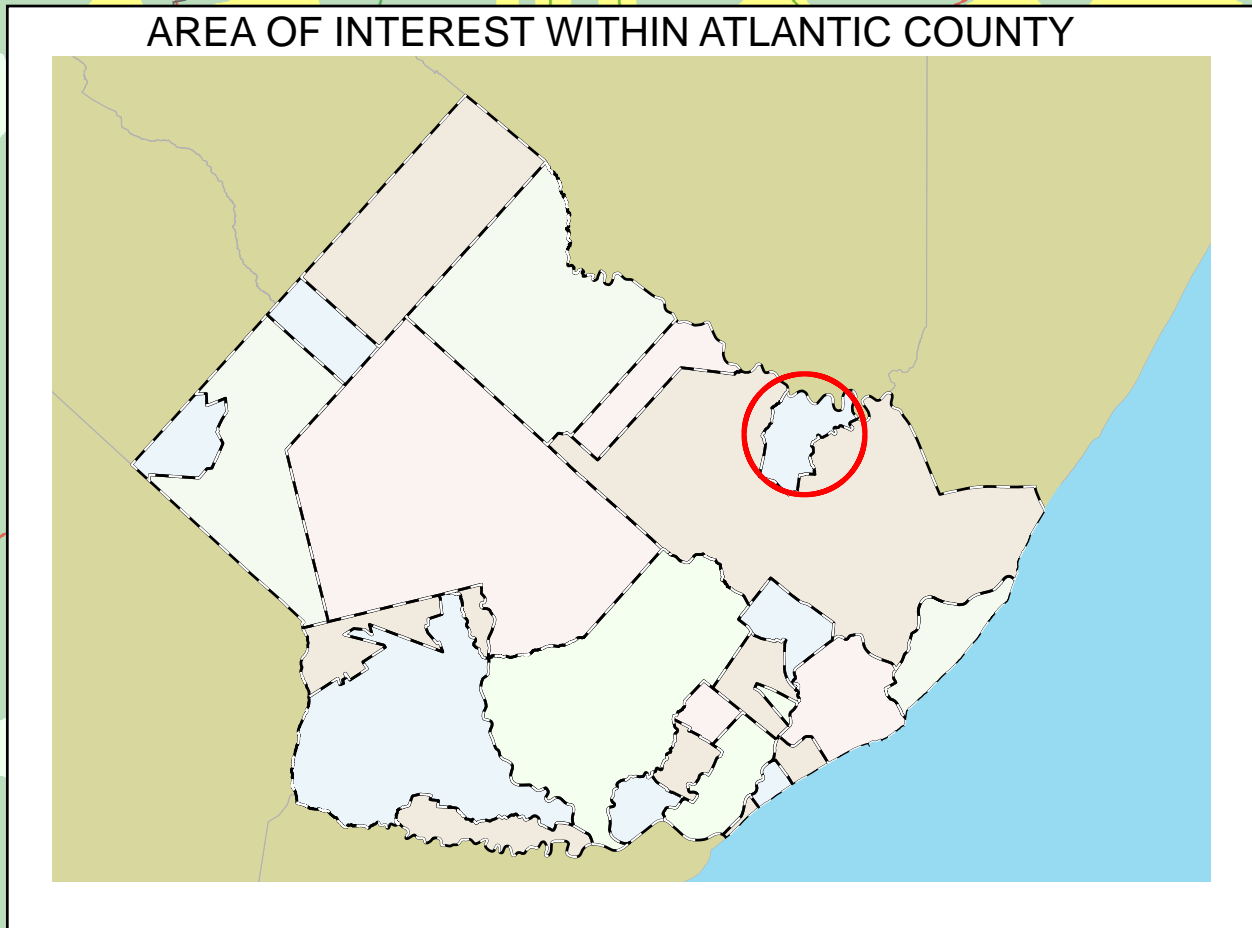
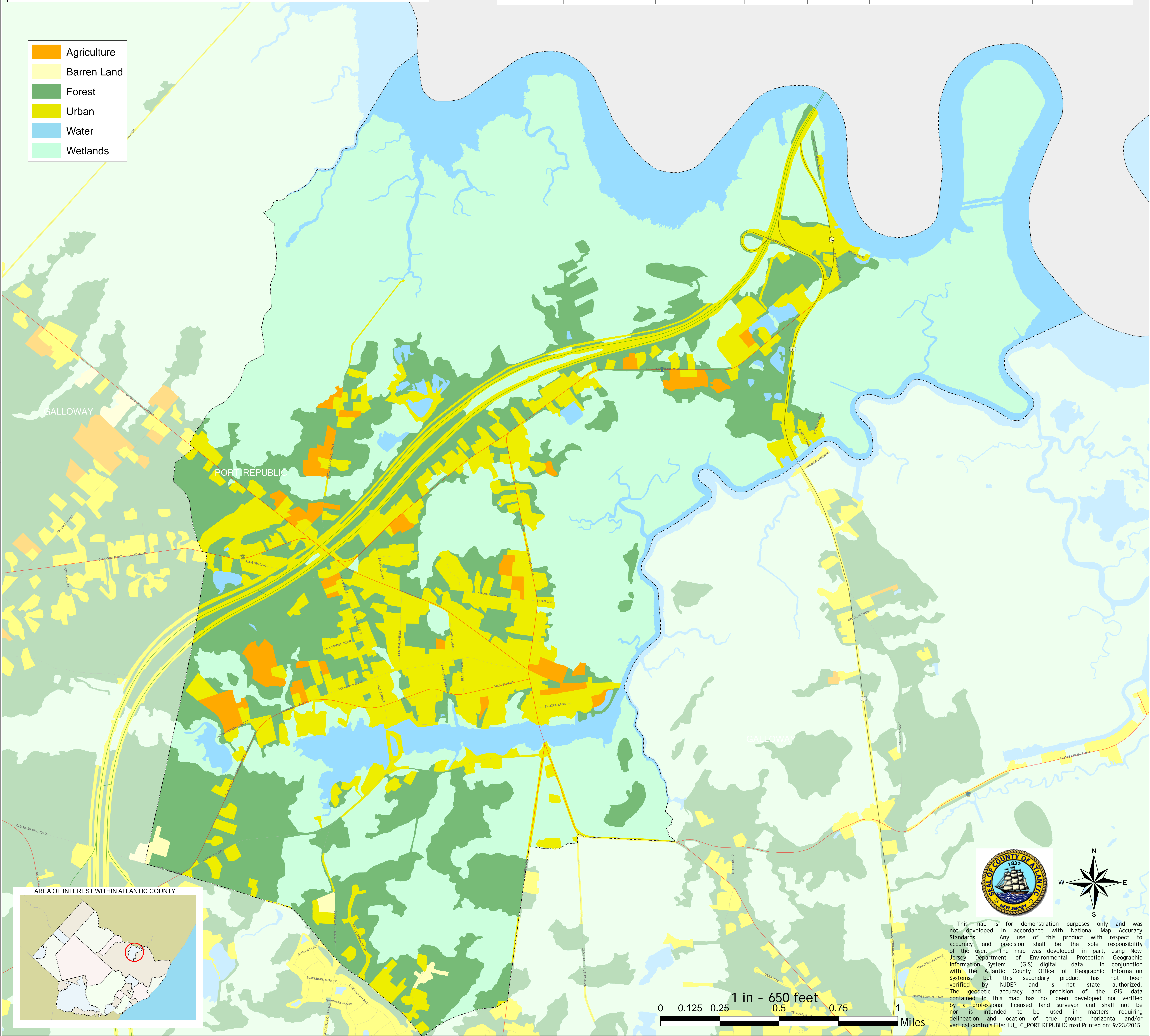


# PORT REPUBLIC LAND USE/LAND COVER 2012 ATLANTIC COUNTY, NJ

| TYPE        | AREA (SQ FT) - 2007 | AREA (SQ FT) - 2012 | ACRES - 2007 | ACRES - 2012 | % OF AREA - 2007 | % OF AREA - 2012 | % CHANGE 2007-2012 |
|-------------|---------------------|---------------------|--------------|--------------|------------------|------------------|--------------------|
| AGRICULTURE | 4276399.16          | 4058907.6           | 98.17        | 93.18        | 1.79%            | 1.7%             | -0.091%            |
| BARREN LAND | 1022465.72          | 512852.09           | 23.47        | 11.77        | 0.43%            | 0.22%            | -0.214%            |
| FOREST      | 50450671.57         | 49597102.23         | 1158.19      | 1138.6       | 21.15%           | 20.79%           | -0.358%            |
| URBAN       | 33658782.45         | 35381077.69         | 772.7        | 812.24       | 14.11%           | 14.83%           | 0.722%             |
| WATER       | 31157492.11         | 31207316.08         | 715.28       | 716.42       | 13.06%           | 13.08%           | 0.021%             |
| WETLANDS    | 117947351.67        | 117755906.99        | 2707.71      | 2703.31      | 49.45%           | 49.37%           | -0.08%             |

- Agriculture
- Barren Land
- Forest
- Urban
- Water
- Wetlands



This map is for demonstration purposes only and was not developed in accordance with National Map Accuracy Standards. Any use of this product with respect to accuracy and precision shall be the sole responsibility of the user. The map was developed, in part, using New Jersey Department of Environmental Protection Geographic Information System (GIS) digital data, in conjunction with the Atlantic County Office of Geographic Systems, but this secondary product has not been verified by NJDEP and is not state authorized. The geodetic accuracy and precision of the GIS data contained in this map has not been developed nor verified by a professional licensed land surveyor and shall not be nor is intended to be used in matters requiring delineation and location of true ground horizontal and/or vertical controls File: LU\_LC\_PORT REPUBLIC.mxd Printed on: 9/23/2015

